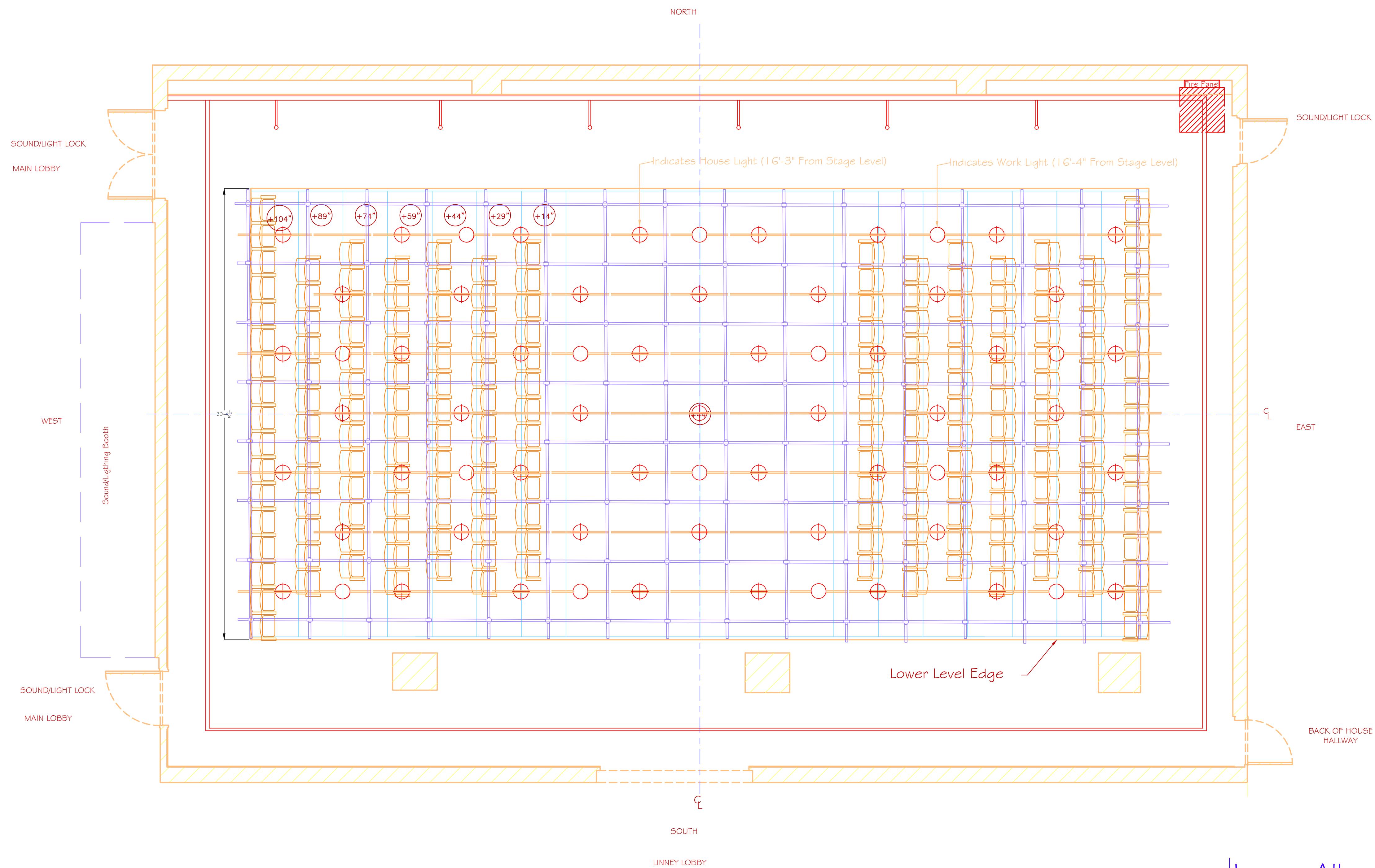


# Signature Theatre



## Linney Alley Configuration Notes:

- Linney Lobby Doors: 10'-0" Wide by 8'-0" Tall
- Grid Height: 16'-10"
- Pit Height: 3'-8"
- Alley Configuration Depth: 45'-0"
- Alley Configuration Width: 18'-0"
- See Notes Page for Building and General Theatre Information

The Pershing Square  
Signature Center  
480 W. 42nd Street  
New York, NY 10036  
212-967-1913

The Linney  
Theatre

Ground Plan  
Alley Configuration

Set Designer:

Technical Director: Drew McCollum  
Drafted By: Drew McCollum

Date: 11-16-2012

Revision: Becca Terpenning

Approved By:

Scale:  $\frac{1}{4}" = 1'-0"$

Plate #

0

of 0

Original Theatre Drawing  
Done by:  
Drew McCollum  
on September 13, 2012